

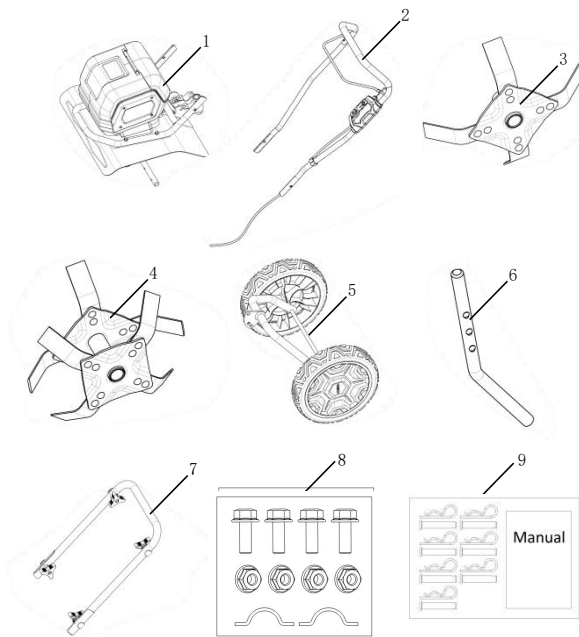
NV16FTB Quick Start Guide



NV16FTB/58V Battery Powered Front Tine Tiller

Please Read the Operator's Manual and Safety Warnings Carefully Before Use

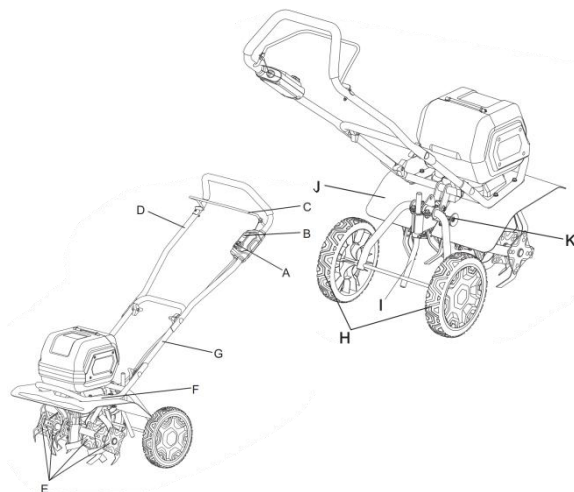
1. Check All the Components after Opening the Package



Package Contents:

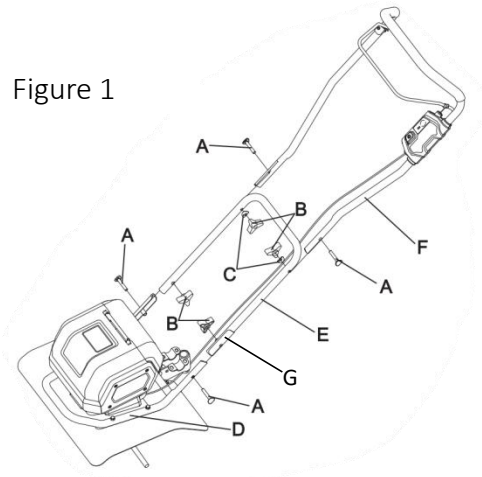
1. Front Tine Tiller Body *1; 2. Upper Handle *1 set;
3. Outer Tines *2 sets; 4. Inner Tines *2 sets;
5. Wheel Assembly *1 set; 6. Damping Rod *1 piece;
7. Lower Handle *1 piece (including: Armrest Lock Bolt M8×50 *4, Armrest Lock Handle *4 pieces, Arc Washer Q8 *2 pieces, Insulating Sheet *2 pieces);
8. Standard Parts *1 bag (Hexagon Head Flange Bolts (small series) M8×16*4, Hexagon Flange Nut A Class M8*4); 9. Manual*1, GB882-88 Pin B Type 8×35*7, B-Shaped Pin *7.

2. Understand the Composition of the Tiller



- A - Start Button B - Speed Control Button
 C - Switch Handle D - Upper Handle E - Tines
 F - Bumper G - Lower Handle H - Wheels
 I - Drag Stake J - Tine Shield K - Wheel Assembly

2. Assemble the Tiller



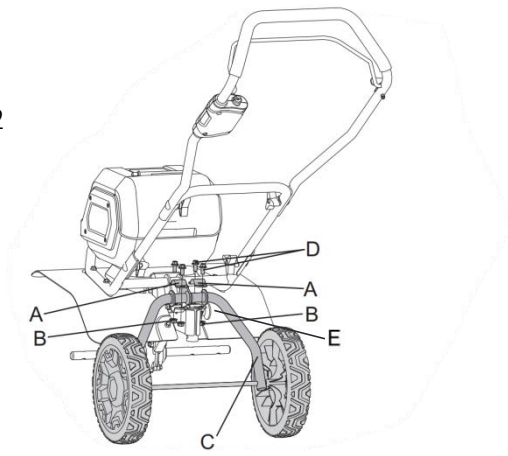
- A - Square Neck Bolt B - Locking Handle
 C - Curved Washer D - Bumper
 E - Lower Handle F - Upper Handle
 G - Insulating Sheet

Installing the Handle

Refer to Figure 1

- Position the lower handle.
 - Insert the lower handle into the bumper.
- NOTE: The lower handle should be installed in the groove of the bumper.
- Align the holes in the lower handle with the bumper and insulating sheet, and secure with a square neck bolt and lock handle.
 - Position the upper handle.
 - Insert the upper handle into the lower handle.
- NOTE: The lower handle should be installed in the groove of the upper handle.
- Align the holes in the lower handle with those in the upper handle, and secure with a square neck bolt, curved washer, and locking handle.

Figure 2



A - Clamps B - Nuts C - Wheels Assembly
 D - Bolts E - Adjustment Handle

Installing the Wheels

Refer to Figure 2

- Disassemble/Assemble wheel assembly.
- Clip the wheel frame into the bracket of the machine.
- Install the clamp and lock it with bolts and nuts.
- Pull the adjustment handle to adjust the walking wheel to the appropriate position.

Figure 3

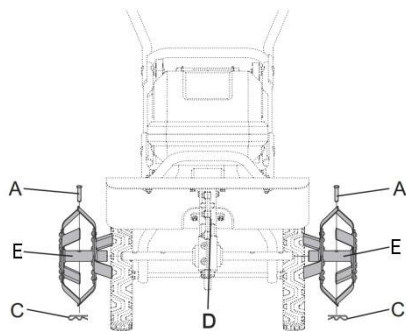
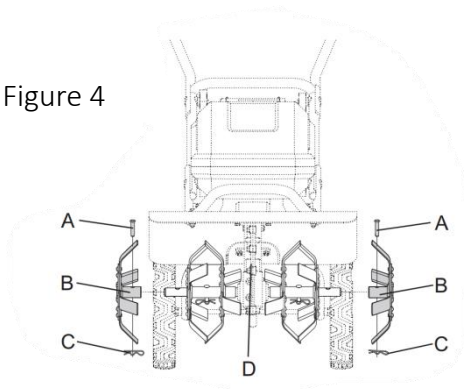


Figure 4



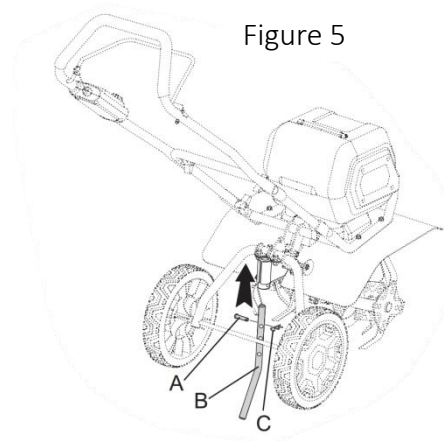
A - Shear Pins B - Outer Tines
 C - Cotter Pins D - Gear Box E - Inner Tines

Installing The Tines

Refer to Figures 3-4

- With user facing the front of the tiller, the outer tine assembly is marked "A", and the inner tine assembly is marked "B".
 - For correct operation of the tiller, the tines must be installed in the correct position, as shown in the figure, place the inner tine assembly on the output shaft.
 - Align the sharp teeth of the left and right tines.
- NOTE: You may have to rotate the tine assemblies until the holes in the assemblies are aligned with the holes in the tine shaft.
- Insert shear pins into the holes of the inner tine assembly and the output shaft. Secure with cotter pins.
 - Install the outer tines on the outer side of the inner tines.
 - Rotate the outer tines until the holes in the tines are aligned with the holes in the tine shaft.
 - Insert shear pins through the holes in the outer tine assemblies and the shaft. Secure with cotter pins.

Figure 5



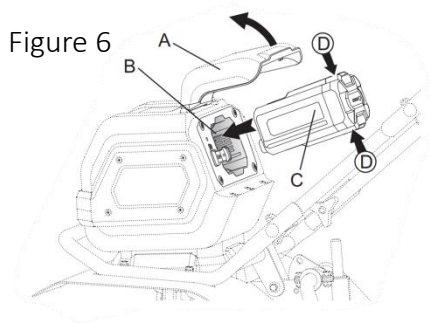
A - Shear Pin B - Drag Stake C - Cotter Pin

Installing the Drag Stake

Refer to Figure 5

- Insert the drag stake into the towing stake bracket of the front tine tiller body. Align the holes on the drag stake with the holes on the drag stake bracket.

- Insert a locking pin to secure the drag stake.
- NOTE: Lower the drag stake so that it sticks into the ground when tilling. Raise the drag stake when transporting.



A - Battery Cover B - Battery Compartment
 C - Battery Pack D - Latches

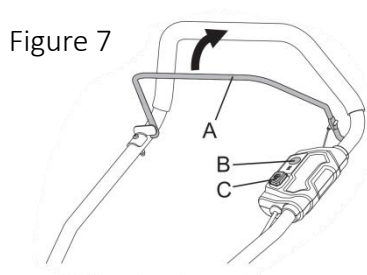
Installation/Removal of Battery

Refer to Figure 6

For installation:

- Open the battery cover.
- Align the contour of the battery pack with the contour of the battery compartment (note: direction of the protruding part of the battery pack), press down on the battery pack until you hear a "click" sound indicating the latch is locked.
- To remove the battery pack, you must press down on the latch and pull back at the same time, as shown in the figure.

3. Starting the Tiller



A - Switch Handle B - Speed Control Button
 C - Start Button

Starting/Stopping the Tiller

Refer to Figure 7

- Install the battery pack.

- Press and hold the start button, pull the switch handle towards the direction of the upper handle, and release the start button to start the tiller.
- To stop the tiller, release the switch handle.